

# SECTION 334

# 334 FUNDING AND ASSOCIATED PROJECTS

| <b>Appropriation of Section 334</b> |                         |
|-------------------------------------|-------------------------|
| Integrated Test Center              | \$ 15,000,000.00        |
| Industrial Initiatives              | \$ 1,255,000.00         |
| <i>LNG Export Facilities</i>        | \$ 50,000.00            |
| <i>Market Access</i>                | \$ 850,000.00           |
| <i>Core Sample Repository</i>       | \$ 25,000.00            |
| <i>Legislative Travel</i>           | \$ 20,000.00            |
| <i>Industrial Park</i>              | \$ 50,000.00            |
| Administration                      | \$ 200,000.00           |
| <b>Total</b>                        | <b>\$ 16,525,000.00</b> |

# ITC

- **Objective:**

- Position Wyoming to be part of an international collaboration on the commercialization of CO<sub>2</sub> utilization from coal and natural gas emissions



# LNG EXPORT

- Projects and initiatives to encourage the development of liquid natural gas export facilities using Wyoming produced natural gas



## WYOMING LNG ROADMAP

April 2014

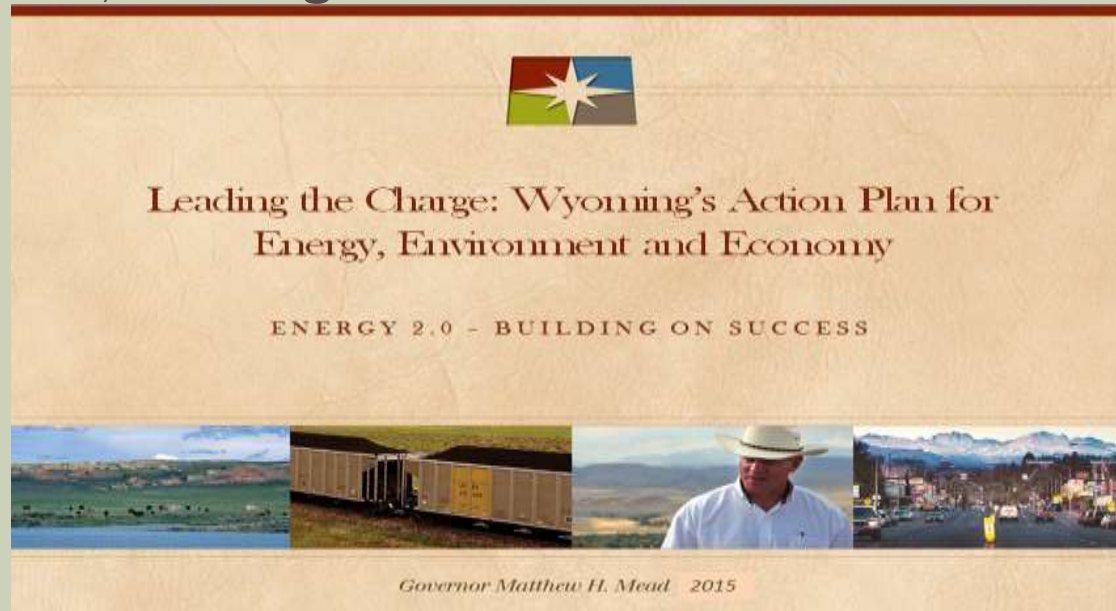


# INTERNATIONAL MARKETS

- International markets are a critical component for Wyoming products and natural resources.
- Protocol Development
  - Inbound Missions
  - Outbound Missions
- Increasing Foreign Direct Investment

# ENERGY STRATEGY

- Undergoing a revised and updated set of initiatives on energy, environment, and regulation



- October 5<sup>th</sup>, 2015 at the Wyoming Oil and Gas Conservation Commission Building
  - All day event to synthesize and identify themes and initiatives

# INDUSTRIAL PARK

- Vision inspired from Alberta's Industrial Heartland
- 2014:
  - Hosted industrial leaders to learn more about this concept and validate the objective of finding ways to add value to Wyoming's mineral resources
- 2015:
  - Wyoming Industrial Parks Reserve Account
    - \$5 million to support future infrastructure opportunities
  - Policy Office has initiated review of the state's rules surrounding the permitting and regulation process
  - Working with the Wyoming Business Council to distribute an industrial readiness assessment to all counties
  - Establishing 4 regional reports on ongoing and prospective projects
    - (Southwest, Central, Northeast, Southeast)