



Big Land. Open Opportunity.

Chamber Merger
WEDA September 2017

BIG LAND. OPEN OPPORTUNITY.



BIG LAND
OPEN OPPORTUNITY

CULTIVATING BOUNDLESS
OPPORTUNITY FOR BUSINESS
AND COMMUNITY



BIG LAND. OPEN OPPORTUNITY.

Why

1. Timing
2. Streamline efficiencies, economies of scale
3. Lack of funding
4. Redundant services
5. Changing of the times – ahead of the curve or get run over



BIG LAND. OPEN OPPORTUNITY.

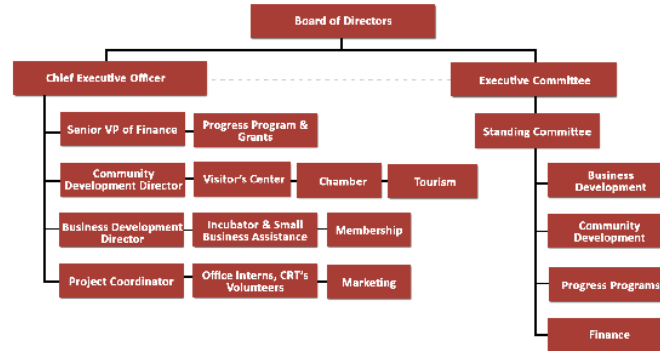
What went well?

1. Organizational chart
2. One board
3. Being prepared with clear messages to members and public
4. Met regularly during merger
5. Member benefits
6. 1 stop shop
7. Clarity in small town and community
8. Streamline efforts
9. Have a good accountant!





Organizational Chart FY 18



BIG LAND. OPEN OPPORTUNITY.



BIG LAND. OPEN OPPORTUNITY.



CHAMBER TRANSITION COMMITTEE

Wednesday, August 24th, 2016

4pm-5pm

GOSHEN ENTERPRISE CENTER CONFERENCE ROOM

Attendees:

AGENDA	NOTES
1. Welcome	A. Wally Wolski, GCEDC President of the board
2. Agenda	A. Timeline B. Communication strategy C. Member lists & benefits D. Legal E. Financials
3. Other	A. Misc. discussion
Next Meeting:	Scheduled meetings – frequency?

NOTES:



December 19th, 2016

Dear Valued Membership,

On January 1, 2017 Goshen County Chamber of Commerce and Goshen County Economic Development Corporation will be merging under one umbrella.

In the past, a merger had been suggested to provide streamlined services to our community. The time has come where this makes sense for both organizations. To start this process, a few months ago, we formed a Transition Team consisting of both Goshen County Chamber of Commerce and Goshen County Economic Development Corporation board members and staff. We began by researching the pros and cons with keeping the ultimate benefit in mind for the businesses and community.

Here are just a few of the benefits you will receive as a member: one fee for both organizations, monthly newsletter and correspondence, notary service, bulk mailing stamp, invitation to ribbon cuttings and networking events, voting privileges, legislative voice, plus much more! The Membership Committee will be reaching out to you the first part of 2017 to explain the details and enhanced membership levels.

Additionally, our new organization will become a one stop shop for all your business and community needs. We will embrace a 360 degree focus on businesses from start-up, to retention, expansion, and everything in between. The Chamber arm will continue assisting businesses with promotional activities and promote tourism events for the County and will remain in the 21st & Main Building at the Visitor's Center. GCEDC will stay focused on leadership, infrastructure development, quality of life issues, grant management, and business recruitment in the Goshen Enterprise Center located at 110 West 22nd Ave.

With this merger, you will become a member of a great organization and receive enhanced benefits while only paying one annual membership a year. Enclosed outlines the benefit levels for membership. If you have any questions, please contact our CEO/Executive Director Ashley Harpstreith 307-532-5162 or ashlev@goshenwyo.com.

This is an exciting new venture, we hope you will join us!

Sincerely,

Goshen County Chamber of Commerce & Goshen County Economic Development Corporation

"The past traditions of our local Chamber will remain and continue to serve both the business communities and residents' interest into the future."

-Wally Wolksi, Past President of GCEDC Board of Directors & Co-Chair of Transition Committee



"On behalf of the Goshen County Chamber of Commerce it has been a privilege to be a part of this process and serve our community."

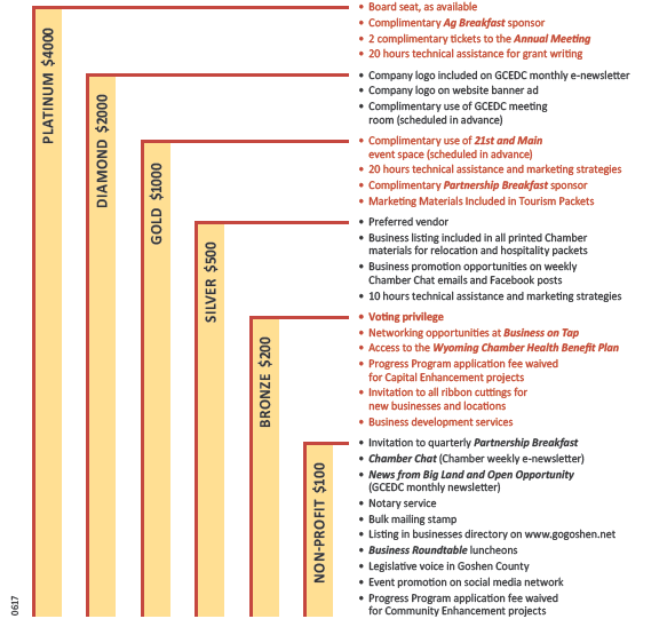
-Linda Evans, President of the Board, Goshen County Chamber of Commerce & Co-Chair of the Transition Committee



BIG LAND. OPEN OPPORTUNITY.



Investment Levels for Enhanced Membership



0687

GOSHEN COUNTY ECONOMIC DEVELOPMENT & GOSHEN COUNTY CHAMBER OF COMMERCE

Partners in Business Development



BIG LAND. OPEN OPPORTUNITY.

Challenges

1. Front end work
2. A lot of meetings
3. Nay sayers
4. Membership +/-

Pros definitely out weigh the cons



BIG LAND. OPEN OPPORTUNITY.



Big Land. Open Opportunity.

Thank you!

BIG LAND. OPEN OPPORTUNITY.